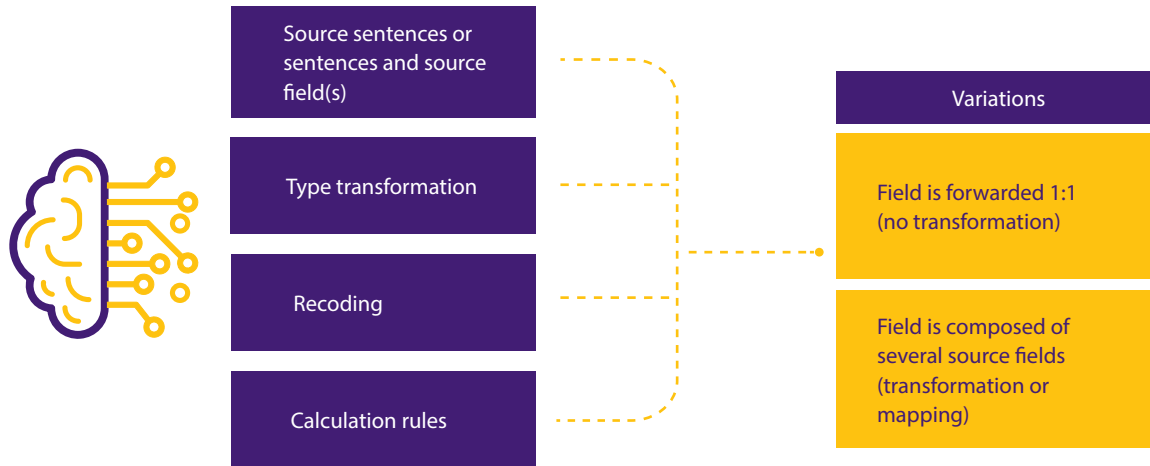


Data Lineage

End-to-end documentation of the origin of data including all steps of the processing and transformation chain, respectively including all field and sentence transformation rules. The documentation contains the following information for each step and field:



A Data Lineage can have following purposes:



Support during error detection, e.g. detection of origin of incorrect data (backtracking)



Support in the care of the Data Warehouse, e.g. detection of potential effects during adding of a new field specification (forward tracking)



Coverage of regulatory requirements (completeness of documentation, support during checks)

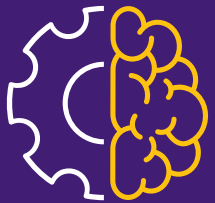
Essentially Data Lineage is relevant for risk data and transaction data

Regulatory basics:

- » BCBS239: The supervisory authorities expect a documentation and comments from banks of all automated and manual processes of the risk aggregation, that creates an end-to-end documentation of the used data.
- » With transaction-based messages, e.g. EMIR, there is a necessity to document them end-to-end, in order to find errors in the reported data and therefore the error source more easily.

For the documentation of the Data Lineage different tools can be used:

- » Documentation of fields and charts with predecessor and successor field and mapping rules
- » Documentation of the graphic lineage with a separate documentation of the mapping rules



targens
a GFT company

As an expert consultancy for banking, compliance and digital innovation, targens is the leading provider of consulting and software solutions. Based in Germany and Austria the company has 30 years of experience in the development of internationally proven compliance services for financial institutions with futuristic and disruptive technologies. Using artificial intelligence and blockchain technology to create innovative products that provide the highest possible value to our clients. With its consulting portfolio, targens supports clients in their banking and corporate management, trading activities and regulatory challenges, e.g. in the field of Environmental, Social & Governance (ESG). targens has been part of GFT since spring 2023. The group is a pioneer in digital transformation. The company develops sustainable solutions based on new technologies, including artificial intelligence and blockchain/DLT. With the transition from targens to GFT, the portfolio has increased significantly, especially in technical terms, and offers customers even more options.

Your direct contact
Integrated Financial Architecture

IFA@targens.de