

# Quality Guidelines - Use Ab Initio graphs

---

Guidelines are essential for effectively managing data quality in the company. They are based on empirical values and are created in close cooperation with Ab Initio consultants. However, for practical purposes, these guidelines must not be a rigid set of rules. targens helps you to find solutions so that you can get the most value from your own data and meet the requirements of regulatory authorities.

---

## Data and its formats – optimised and resource-saving

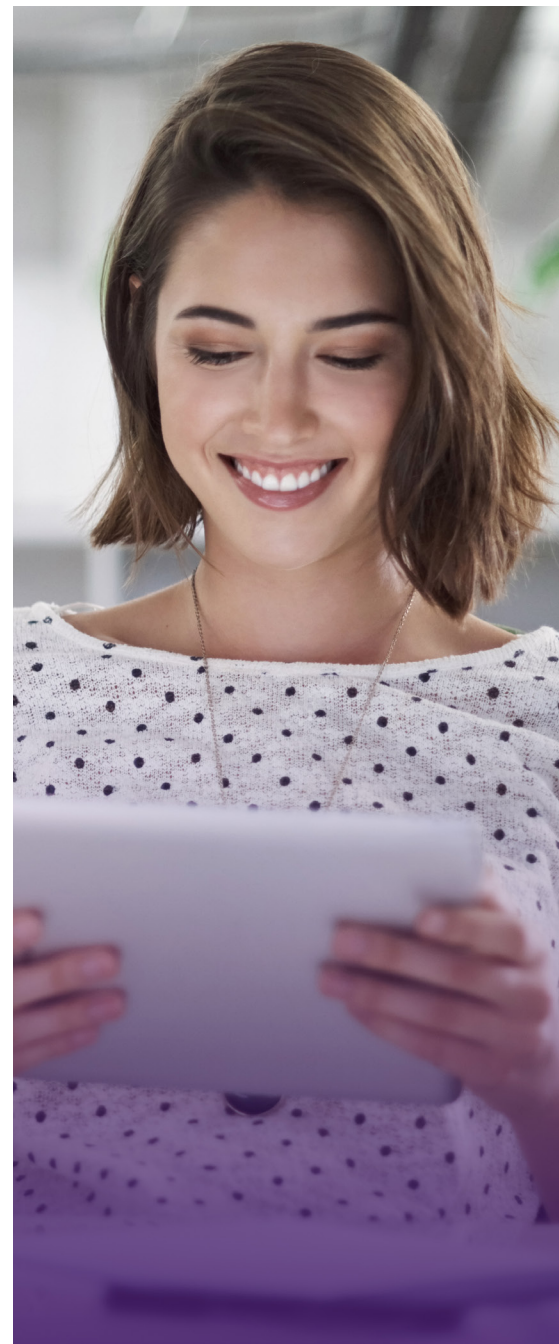
Companies have to deal with ever-increasing amounts of data. Therefore, it is important that this is as optimised and resource-saving as possible. Consider the following points:

- » Reduction of data volumes at the earliest possible point in time
  - » Enhancement of data volumes as late as possible
  - » Alignment of data formats for the best possible performance
  - » Data URLs must contain the correct protocol prefix
  - » Use data parallelism from the start if possible
  - » Know-your-data – creation of a data profile
- 

## Components – purged and structured

Complex company data requires a stable data architecture made up of perfectly coordinated components. Consider the following points:

- » Remove unnecessary components (e.g. multiple partitioning / sorting on the same key or gather before components with implicit gather on IN port)
- » Meaningful naming of components
- » In-memory components - all aspects taken into account



## Transformation - documented and easy to maintain

In transformation processes, lots of steps can lead to delays and unnecessary effort. Consider the following points:

- » Ensure low-maintenance and high-performance transformation (e.g. through wild card rules and automatic record conversion)
- » Avoid unnecessary multiple transformations
- » Use rules that are as simple as possible
- » Avoid Output\_Select and Input\_Select functions
- » No unnecessary Filter Joins

## Data lineage - transparent and ready for BCBS 239

A seamless determination and documentation of the origin of your data enables you to be BCBS 239 compliant. Consider the following points:

- » Consider warnings and notes when checking graphs
- » Set generic graphs (multiple PSETs) to „do not analyse“.
- » „Fix“ lineage breaks (e.g. read / write separate values)

targens supports customers in all topics around integrated financial architecture



## targens»

As an expert consultancy for banking, compliance and digital innovation, targens is the leading provider of consulting and software solutions. Based in Germany, Austria and Switzerland, the company has 30 years of experience in the development of internationally proven compliance services for financial institutions with futuristic and disruptive technologies. Using artificial intelligence and blockchain technology to create innovative products that provide the highest possible value to our clients. With its consulting portfolio, targens supports clients in their banking and corporate management, trading activities and the safeguarding of business processes.

You have questions or want more information? Then get in touch with us!



**Your contact**  
**Competence Center**  
**Integrated Financial Architecture**

IFA@targens.de